



All for Living cells
for your imaging®

Stage Top Incubator

For microscopes

Deliver High-Quality system to everyone!

Reach out to every user in every country who requires great cost performance & high-quality system.



Model: STRG-WEL SX-SET

STR SERIES

Time-Lapse Entry Model

Lineup

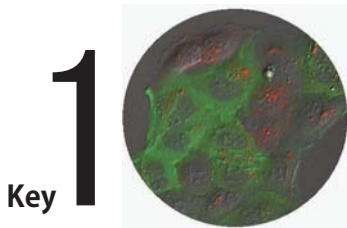
STRG-WEL SX-SET

With **digital CO2 mixer**
for **100%CO2 gas use**

STRF-WEL SX-SET

With **analog flowmeter**
for **premixed (5%CO2+95%Air) gas use**

*** All Dish Attachments and Fixing Lids are included ***



Tokai Hit QUALITY

Keep your sample happy with Tokai Hit High performance Heating, Humidity and CO2 control.



Simple & Reasonable

The system is Simple but yet high performance.



Happy set for start up

Necessary accessories are included in the package as standard. No more suffering from the product-selection.

Advanced Start up Stage Top Incuabtor

STR SERIES Time-Lapse Entry Model

Accessories included

Following items are included in the system. No more quote / order of additional accessories required.

Applicable dish	Dish Attachment	Fixing Lid
35mm petri dish	ATX-D 	LX-D35 
50/60mm petri dish		LX-D56 
Chamber slide Slide glass Chambered coverglass	ATX-CSG 	LX-CSG 

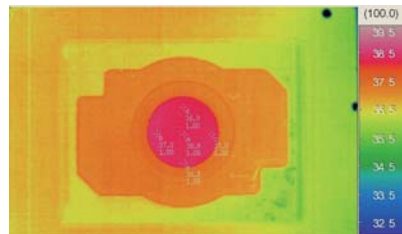
Touch-Panel control

Multiple monitors to ONE, better and simple.



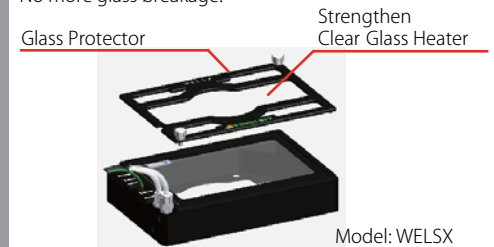
Tokai Hit QUALITY

Uniform temperature regulation with original Top Heating Control keeps your sample happy.



Prevent glass breakage forever

Protect your glass breakage with double features. No more glass breakage!



Universal Chamber WELSX

Outside dimension is same as wellplate (127x85mm).

Applicable vessels

- 35mm petri dish
- 50mm petri dish
- 60mm petri dish
- Chamber slide
- Slide glass
- Chambered coverglass



Model: WELSX

※cannot accommodate wellplate

Easy 10 minutes setup

Only 4 cables are need to be connected (power cables and gas tubes 2pc). Good-bye to complicated setup!

One-touch: magnetic fixing

Secure vessels and Dish Attachments are much easier to use. Introduce Simple but Strong fixing to keep your vessel in same place.

Experiment as you plan

There are risk of using glassware, but with protector and strengthen clear glass heater will be Free from glass breakage and stopping your experiments during repairing.

Detachable Lens Heater

Prevent entanglement of Lens Heater during imaging. The hook-up connector is secure by either magnet or manual-lock.

Specification (STRG)

Operation	Setting Method	Touch-panel
Incubation mode	Manual	○
	Sample Feedback	△ (Optional)
Humidity	Internal humidifier	More than 90%
CO ₂ Control	CO ₂ regulation	Digital
	CO ₂ setting range	5.0~20%
	CO ₂ accuracy	±0.1% (at 5% CO ₂)
	Gas flow rate	160ml/min
Stage Heater	Regulation	Hi-speed ON/OFF
Software	Data logging	△ (Optional)

Feature and design	Strengthen Clear Glass Heater	○
	Top Heater Heating Method	○
	Detachable Lens Heater designed	○
Accessories	Connector	Flat cable
	Magnetic Dish Attachment	○
	Magnetic Dish Lid	○
Dish Attachment and Fixing Lid included in the system	One-touch gas tube	○
	35/50/60mm dish	○
	Chamber slide	○
	Slide glass	○
	Chambered coverglass	○